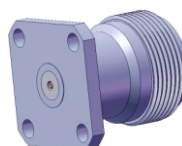
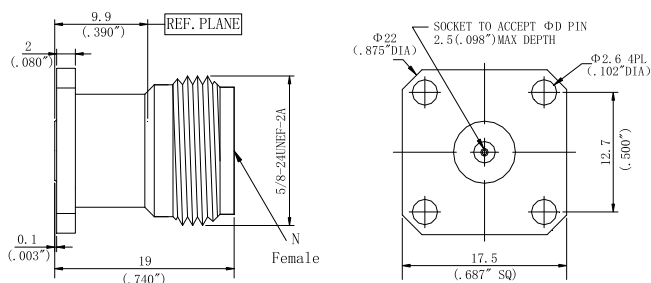
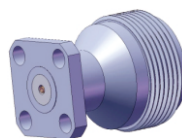
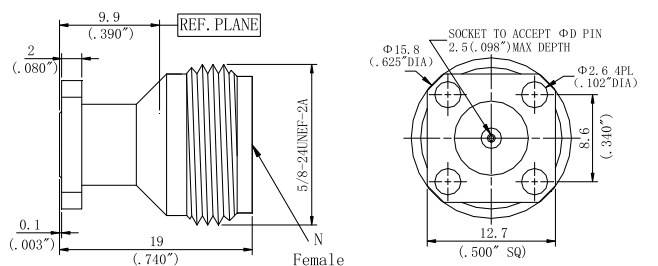


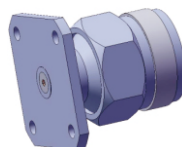
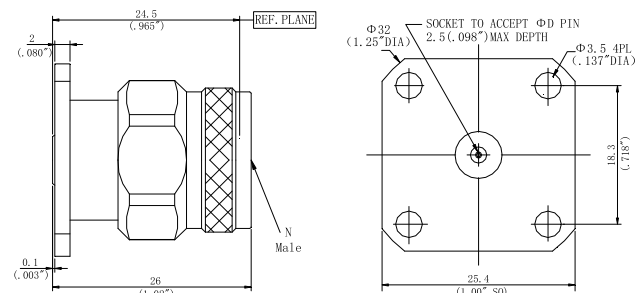
型号	插孔直径 ϕD
LNTFS46F10	0.46mm/0.018"
LNTFS51F10	0.51mm/0.020"
LNTFS91F10	0.91mm/0.036"



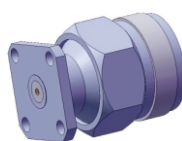
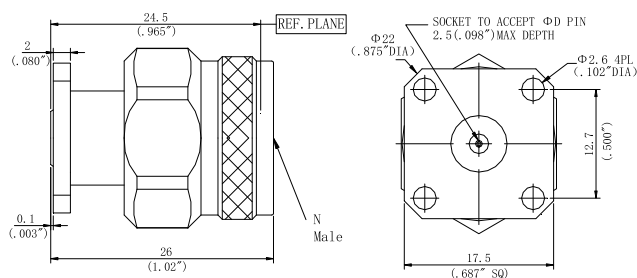
型号	插孔直径 ϕD
LNTFS46F09	0.46mm/0.018"
LNTFS51F09	0.51mm/0.020"
LNTFS91F09	0.91mm/0.036"



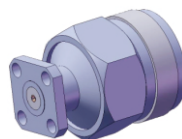
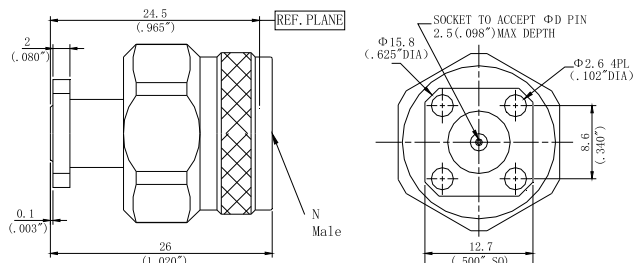
型号	插孔直径 ϕD
LNTFS46F01	0.46mm/0.018"
LNTFS51F01	0.51mm/0.020"
LNTFS91F01	0.91mm/0.036"



型号	插孔直径 ϕD
LNTMS46F10	0.46mm/0.018"
LNTMS51F10	0.51mm/0.020"
LNTMS91F10	0.91mm/0.036"



型号	插孔直径 ϕD
LNTFS46F09	0.46mm/0.018"
LNTFS51F09	0.51mm/0.020"
LNTFS91F09	0.91mm/0.036"



型号	插孔直径 ϕD
LNTMS46F01	0.46mm/0.018"
LNTMS51F01	0.51mm/0.020"
LNTMS91F01	0.91mm/0.036"